



# **RULES & GUIDELINES**

**6ONLAX**

# **RULES & GUIDELINES FOR 6ONLAX**

Last edit on 9/3/2020

## **TABLE OF CONTENTS**

### **1. Player Eligibility**

- 1.1. Registration & Fees
- 1.2. Age/Grade, Skill Level & Gender Divisions
- 1.3. US Lacrosse Membership
- 1.4. Refunds

### **2. Team Rosters**

- 2.1. Proof of Age
- 2.2. Falsifying Ages
- 2.3. Protests

### **3. Code of Conduct**

- 3.1. Sportsmanship
- 3.2. Anti-Harassment and Discrimination Policy and Corrective Action Plan
  - 3.2.1. Corrective Action Plan for Tournament Participants
  - 3.2.2. Steps to be taken for violations of the Code of Conduct, Anti-Harassment and Discrimination Policy or expectations
  - 3.2.3. Corrective Action Policy for Parents and Adults
  - 3.2.4. Steps to be taken for Adult violations of the Anti-Harassment and Discrimination Policy

### **4. Rules & Format**

- 4.1. General
- 4.2. Unnecessary Roughness
- 4.3. U9 Boys Rules
- 4.4. U11 Boys Rules
- 4.5. U13 Boys Rules
- 4.6. Notable Rule Changes for Girls

### **5. Modified Rules for 6onLAX**

- 5.1. Rules
- 5.2. Small-Sided Unified Field Size & Markings

### **6. Score Keeping & Reporting**

### **7. Bracketing, Rankings, Seeding, Tie-Breakers**

- 7.1. Rankings and Pool Play Seeding

# RULES & GUIDELINES FOR 6ONLAX

Last edit on 9/3/2020

## 1. Player Eligibility

### 1.1. Registration & Fees

All participants must complete and submit online registration through Halo Lax Events LLC and agree to the “Release and Waiver of Liability AGREEMENT”.

- Players should register into divisions based upon age/grad year, gender and playing experience where indicated.
- Players may play “up” in age/grade groups, but NOT play “down”.
- Any team or player determined by the Event Director to have falsified age or skill level could be dismissed from play.
- Teams that span more than one age group must register in the division of the oldest player on the team.

In the situation where teams place themselves in the wrong division, the Event Director will attempt to rectify the error, but cannot guarantee proper placement. It is each Team’s responsibility to register in the proper division, failure to properly register may result in disqualification from the tournament, and registration fees will not be refunded.

Fees may be paid by the player or by the team at the time of registration. Fees are not transferrable from one to another.

### 1.2. Age/Grade, Skill Level & Gender Divisions

- Boys/Men
- Girls/Women
- Youth grouping
  - 9U-10U
  - 11U-12U
- Middle School grouping
  - 13U-14U
- High School Grouping
  - 15U-16U
  - 17U-18U
- Adult

# RULES & GUIDELINES FOR 6ONLAX

Last edit on 9/3/2020

## 1.3. U.S. Lacrosse Membership

This event is part of The US Lacrosse Sanctioning Program, which provides best practices in order to create a more safe and consistent event. Through the adoption of the Sanctioned Tournament Standards, Halo Lax Events commit to providing the best possible lacrosse experience.

All tournament participants must be current US Lacrosse members in order to participate. US Lacrosse membership numbers will be collected and verified when completing event and tournament registration waivers. If you are not currently a member, or your membership is set to expire during the event, please visit US Lacrosse to [Register](#).

## 1.4. Refunds

In the occurrence that the Event or Tournament is cancelled before the official event start date a full refund will be issued. Credit (coupon) will be issued to registered players that are replaced on the Official Team Roster. The credit (coupon) may be used by a replacement player upon registration check-out. No team will receive a full refund. If a registered team or player withdraws from an Event or Tournament 45 days prior to the official scheduled start date, a refund of registration fees paid less 25% will be issued. No refunds will be issued for withdraw less than 45 days prior to the official scheduled start date. No refunds will be issued if the Event or Tournament is shortened in part for any reason, including weather, or any "Act of God." Halo Lax Events LLC, its officers, employees, staff and affiliate partners will not be responsible for any expenses incurred by any individual, team, club or organization if the Event or Tournament is canceled in whole or in part.

## 2. Team Rosters

Each team must complete the official team roster form and submit the form to the Event Director at least 24-HOURS prior to the start of the Tournament. No player may compete, or be rostered, on more than one team during the tournament. Any team with a player in violation of this rule will forfeit all games in which the player is known to have competed and therefore, forfeit the opportunity to advance to the playoff round.

### 2.1. Proof of Age

Tournament officials have the right to demand Proof of Age for any player included on the roster. Players are required to carry Proof of Age with them at all times. Types of proof include: birth Certificate, drivers License, Current School Report Card.

# RULES & GUIDELINES FOR 6ONLAX

Last edit on 9/3/2020

## 2.2. Falsifying Ages

The Event director may dismiss any player or disqualify any team from the tournament and potentially future events if any player or coach determined by the Event Director to have falsified age or identity where applicable. This act of non-sportsmanship will not be tolerated by Halo Lax Events LLC.

## 2.3. Protests

Any team wishing to Protest the Roster or players on a roster may do so by submitting a \$50 Roster Protest Fee and completing a Roster Protest Form. After receiving the \$50 Roster Protest Fee and Roster Protest Form, and when available, the Event Director will verify each player of the team by confirming the Official Team Roster and each player's Proof of Age documentation. A game in progress will not be interrupted for this process. Any team violating the requirements for the Official Team Roster Form, Player Registration and or Proof of Age when protested will be disqualified from the event and all games players will be forfeited.

## 3. Code of Conduct

### 3.1. Sportsmanship

**We love a good game and sportsmanship!** Respect the game. Sportsmanship and the concepts of fair and honorable play are essential to the overall success of the Tournament. Do not approach the game officials before or after a game. Enjoy the games and shout encouraging words!

- Players, coaches, officials, parents and spectators are to conduct themselves in a manner that "Honors the Game," demonstrates respect for others and is consistent with the businesslike operation of the Tournament for the benefit of everyone involved.
- The emphasis on winning should never be placed above the value of good sportsmanship, the concepts of fair and honorable play, or the spirit of the game.
- Poor sportsmanship, taunting, trash talking, fighting or other unbecoming behavior on the part of players, coaches, parents or spectators will not be tolerated.
- Unsportsmanlike conduct will minimally result in a 1-minute non-releasable penalty, but officials are authorized to handle such conduct in their reasonable judgment based on the circumstances, including ending the game (which will be treated as a forfeit by each

## **RULES & GUIDELINES FOR 6ONLAX**

Last edit on 9/3/2020

team regardless of “who did what”). Poor sportsmanship may also result in ejection from the game or the facility.

- Only head coaches are permitted to address the officials; coaches are expected to do so in a courteous manner during the game. Adults involved with the game are not permitted to openly or maliciously criticize, badger, harass, or threaten an official. Derogatory comments are unacceptable and subject to discipline, including ejection.
- Officials are expected to conduct themselves as professionals and in a manner that demonstrates courtesy and fairness to all parties while exercising their authority on the field.
- Eligibility requirements, such as age/grade must be followed. They have been established to encourage and maximize participation, as well as promote safety. The Tournament relies on the good faith of coaches and players as well as their representations regarding age during the registration process.
- The Tournament expects all coaches to understand the rules of the Tournament and communicate them to members of the team.
- Head coaches may report any issues regarding officials and/or other teams to a field marshal, Tournament event director or their representatives at Tournament headquarter Tent. The Tournament will use its reasonable efforts to address any concerns with such officials, the field managers, the Assigning Official(s) and/or such coaches, as appropriate in their discretion.
- Tournament directors reserve the right to adopt and implement such other rules or regulations as it determines are necessary or appropriate to further the goals and objectives of the Tournament.

### **3.2. Anti-Harassment and Discrimination Policy and Corrective Action Plan**

Our tournament prohibits and will not tolerate acts of harassment, discrimination and bullying. Harassment, discrimination or bullying of any gesture, any written, verbal or physical act, or any electronic communication, whether it be a single incident or a series of incidents that:

1. Are reasonably perceived as being motivated by either any actual or perceived characteristic, such as race, color, religion, ancestry, national origin, gender, sexual orientation, gender identity and expression, or a mental, physical or sensory disability.
2. Takes place in relation to any program function or team; and that a reasonable person should know, under the circumstances, will have the effect of physically or emotionally

## RULES & GUIDELINES FOR 6ONLAX

Last edit on 9/3/2020

harming a player or damaging the player's property, or placing a player in reasonable fear of physical or emotional harm to his/her person or damage to his/her property.

3. Has the effect of insulting or demeaning any player or group of players or creates a hostile environment for the player by interfering with a player's participation or by severely or pervasively causing physical or emotional harm to the player. (N.J.S.L 18A:37-14)

Any participant, coach, staff member, fan or volunteer may file a grievance when necessary. All grievances should be written and directed through the following sequence of authorities:

### 3.2.1. Corrective Action Plan for Tournament Participants

- If a coach, parent or official is notified of participant misconduct, they should report the allegation in writing as soon as possible, but no later than 24 hours after the incident to the Tournament Director. Complaints may also be made in person during the event but should also be documented in writing after the initial complaint has been made. If a coach or official does not report an infraction to the Tournament Director within 24 hours of receiving a complaint, they are subject to disciplinary action which may include suspension or expulsion.
- The Tournament Director will gather all pertinent information in a fair, respectful and confidential manner regarding the alleged harassment, discrimination or bullying and review with both the accuser and the accused as soon as possible.
- After an investigation is conducted, the Tournament Director will evaluate all findings and bring a final resolution to all parties involved. Participants who are found guilty of violating the antiharassment and discrimination policy will be subject to disciplinary action. All participants that are found guilty of major infractions (violence, racist, homophobic or sexist slurs etc.) will be expelled immediately at the first infraction with no consideration for review.
- If no resolution is found, an additional ethics complaint may be filed with the US Lacrosse Ethics Advisory Subcommittee here. The USL EAS seeks to develop resources and standards for the national lacrosse community, as well as investigate and manage ethical issues that arise within the organization. NOTE: All prior steps must be taken before submitting an ethics complaint with US Lacrosse. Complaints that do not adhere to this process, will not be considered.

### 3.2.2. For violations of the Code of Conduct, Anti-Harassment and Discrimination Policy or expectations, these steps will be followed:

## RULES & GUIDELINES FOR 6ONLAX

Last edit on 9/3/2020

**STEP 1 – GAME SUSPENSION.** The Tournament Director will discuss undesirable conduct with the accuser and stress that this behavior will not be tolerated. The Tournament Director will suspend the offending player for a certain number of games depending on the severity of the incident\*. The team coach and the Tournament Director must meet to discuss expected conduct before the player can resume playing. The player will be warned that the next offense will result in his/her expulsion from the event or tournament.

**STEP 2 – TOURNAMENT EXPULSION.** The participant on the 2nd offense will be expelled from the event and no refund will be given. The Tournament Director will also document this disciplinary action in writing and forward the incident to the Team or Program Director within 24 hours of the incident.

*\*These guidelines are not absolute in dealing with behavioral problems. Severe situations could merit harsher sanctions against participants and could result in immediate game suspension or expulsion. All participants that are found guilty of major infractions (violence, racist, homophobic or sexist slurs etc.) will be expelled immediately at the first infraction with no consideration for review.*

### 3.2.3. Corrective Action Policy for Parents and Adults

Family involvement is vital to the development of young athletes. Whether sitting in the stands, or helping as a volunteer, we want our families to set a positive example. Parents and adults who do not follow the Anti-Harassment and Discrimination Policy will be subject to a Corrective Action Plan. Any parent or adult may file a grievance when necessary. All grievances should be written and directed through the following sequence of authorities:

- If a parent, coach, staff member, volunteer, official or fan is the victim of harassment, discrimination or bullying, the victim must report the allegation in writing within 24 hours to the Tournament Director. Complaints may also be made in person during the event but should be documented in writing after the initial complaint has been made. If a coach or official does not report an infraction to the Tournament Director within 24 hours of receiving a complaint, they are subject to disciplinary action which may include suspension or expulsion.
- The Tournament Director will gather all pertinent information in a fair, respectful and confidential manner regarding the alleged harassment, discrimination or bullying and review with both the accuser and the accused as soon as possible.
- After an investigation is conducted, the Tournament Director will evaluate all findings and bring a final resolution to all parties. Those who are found guilty of violating the anti-harassment and discrimination policy will be subject to disciplinary action. All parties that are found guilty of major infractions (violence, racist, homophobic or



## RULES & GUIDELINES FOR 6ONLAX

Last edit on 9/3/2020

sexist slurs, etc.) will be expelled immediately at the first infraction with no consideration for review.

### 3.2.4. For adult violations of the Anti-Harassment and Discrimination Policy, the following steps will be taken:

**STEP 1 - VERBAL WARNING.** The Tournament Director will discuss undesirable conduct with the accused and stress that this behavior will not be tolerated. The next offense will lead to the accused being banned from all tournament events.

**STEP 2- TOURNAMENT EXPULSION.** The accused will be banned from attending all contests after a 2nd offense. The Tournament Director will also document expulsion details in writing and forward the incident to the Team or Program Director within 24 hours of the incident.

*\*These guidelines are not absolute in dealing with behavioral problems. Severe situations could merit harsher sanctions or immediate expulsion. All parties that are found guilty of major infractions (violence, racist, homophobic or sexist slurs, etc.) will be expelled immediately at the first infraction with no consideration for review. If warranted, a police report may be required or strongly recommended.*

## 4. Rules & Format

### 4.1. General

- US Lacrosse rules apply for all youth divisions [USL Girls](#) / [USL Boys](#)
- National Federation High School Rules apply for all middle and high school brackets, except as modified
- NCAA Rules apply for all collegiate and adult brackets High school bracket rules may be modified to include NCAA Rules

### 4.2. Unnecessary Roughness

- Big hits and overly physical play (even within 3 yards from a loose ball), as well as excessive force, roughness, checking or hitting off the ball or any hits described above, constitutes unnecessary and will result in either a 1-minute to 3-minute penalty in the discretion of the official(s), and may be made non-releasable in the judgment of the official(s).

### 4.3. U9 Boys Rules

## **RULES & GUIDELINES FOR 6ONLAX**

Last edit on 9/3/2020

- No body checking; no one-handed checks
- Man-Up/Down – Player serves all penalties, team does not (i.e., penalized player comes off the field and switches with another). Ball is awarded to non-penalized team and player with ball will enjoy a 5-yard advantage relative to his cover man at the mid-line or wherever the official restarts play.
- Ball is hot at all times (no minimum number of passes)
- Advancement/Stalling Rule – does not apply, but see “advance the ball” command by an official
- no sticks longer than 40 inches (unless both coaches agree)
- Advancement/stalling rules do not apply at this level, but officials can command a team to “advance the ball” within 5 seconds

### **4.4. U11 Boys Rules**

- No body checking; no one-handed checks
- Advancement/Stalling Rule – does not apply, but see “advance the ball” command by an official
- no sticks longer than 52 inches (unless both coaches agree)
- Advancement/stalling rules do not apply at this level, but officials can command a team to “advance the ball” within 5 seconds

### **4.5. U13 Boys Rules**

- No one-handed and body checks

### **4.6. Notable Rule Changes for Girls**

- Defending players cannot run through the crease
- All USL specifications for sticks and pockets requirements are in force
- 3 seconds in the arc - Defenders cannot remain inside the 8m arc unless marking an opponent within a stick’s length. More than one defender can mark the ball carrier in the 8m. However, more than one defender can mark the ball carrier in the 8m as long as they are within a stick’s length.
- Shooting space - Defenders cannot obstruct the free space to goal if not marking an opponent or playing the ball carrier within a stick’s length.
- Goal circle violations - no player other than the properly equipped goalkeeper may enter the goal circle at any time. Offensive players may not follow through into the goal circle on a shot
- Dangerous Propel, Dangerous Shot and Dangerous Follow Through are shooting fouls
- Delay of Game – Self-Start: Allowance for free movement on a whistle or a stoppage of play. Teams and players that attempt a self-start beyond a playing distance, fail to move when directed, make no attempt to move, or encroach on the ball carrier prior to her commencing plan shall be penalized.

## RULES & GUIDELINES FOR 6ONLAX

Last edit on 9/3/2020

- At the 12U and 14U levels, self-start when self-start is not an option is a false start and a change of possession
- Inclusion of the neck area in the penalty for check to head
- Repeated fouls disrupt the flow of play and present a risk of injury and unsafe play. Any foul on the field is a warning to all participants. When a team or an individual player is recognized by the officials and continues to commit a foul or a series of fouls, a warning shall be given and any consecutive foul may be carded.
- All goalkeepers shall wear chest protectors designed for lacrosse that meets the NOCSAE ND200 standard

### 5. Modified Rules for 6onLAX

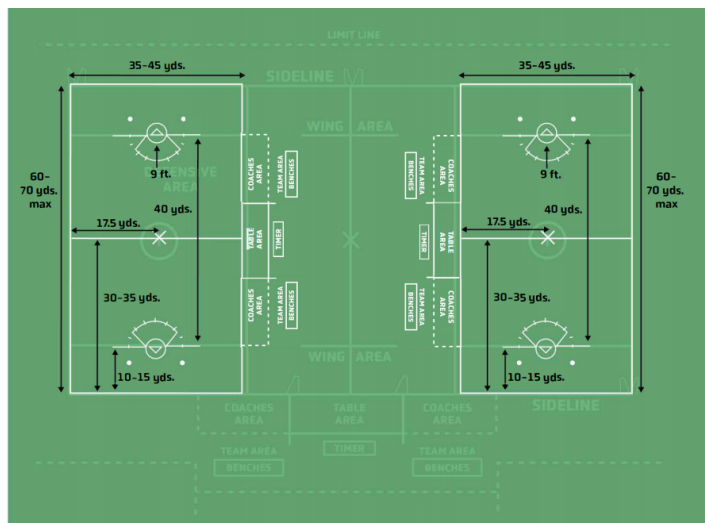
#### 5.1. Rules

- **Field Size:** Modified field 60x30 yards
- **Number of Players on the Field of Play per Team:** One 1-Goalie and Five 5-Field players aside. Five 5-Field players may run the field on offense and defense
- **Stick Size:** Short sticks (40"-42") and Goalie sticks only
- **Game Time:** Games/halves/periods start and stop on a central horn
  - Running time clock
  - Two 12-minute running time periods
  - 3-minute halftime
  - No timeouts
- **Begin Play: A faceoff or draw at midfield begins each period**
- **Scoring:** One 1-Point for each goal scored
  - Games can end in a tie
- **Substitution:** No horns. Player substitution will be on the "fly". Players must enter and exit the playing field through the designated box
- **Goalie Play:** The goalie may double the ball ONLY during the final One 1-minute of regulation game time. After goals scored, the goalie will begin play outside of the crease area by clearing the ball
- **After a Goal:** Goalies have Five 5-seconds to put the ball in play either passing it or running it out of the goal circle
- **Defending players** can run through the crease but cannot act as a goalie
- **Ball Out of Bounds:** Change of possession
- **Missed shot Out of Bounds:** Change of possession
- **Over-and-back:** Prohibited

# RULES & GUIDELINES FOR 6ONLAX

Last edit on 9/3/2020

## 5.1.1. Unified Field Size & Markings



## 6. Score Keeping & Reporting

- Officials will keep score on each field during the game, to confirm scores with opposing coaches, and to report scores to the Field Marshal and or tent following the games

## 7. Bracketing, Rankings, Seeding, Tie-Breakers

### 7.1. Rankings and Pool Play Seeding

- National Rankings and points will be used to seed the National Championship Brackets and Pools, but Rankings will not necessarily be used to seed the Regional Event Brackets and Pools.
- **Championship Bracket seeding** for each team will be determined by Win/Loss record. A forfeited game is scored as 6-0 win for the team that is present. Any team that forfeits a game during the tournament will be ineligible to compete in any playoff games. Referees will provide the winning coach a scorecard, which must be turned into the Headquarter Tent immediately following the game. For games where the score card is not returned to the Headquarters Tent, a verbally communicated score will be accepted until the score card can be produced.

## RULES & GUIDELINES FOR 6ONLAX

Last edit on 9/3/2020

- **Tie-Breakers:** When two teams from one Pool are tied in record following Pool Play games, the team that won the game in Head to Head competition will be the higher seed. For teams that are tied in record, if one team forfeited a game, they will automatically be considered the lower seed (unless otherwise decided by a tournament official). When three or more teams from one pool are tied in record following Pool Play games, ties between the three or more teams will be broken by the following:

- |   |  |
|---|--|
| (1) head to head results between the tied teams | (4) goal difference in pool play games |
| (2) goal difference in head to head games       | (5) goals against in pool play games   |
| (3) goals against in head to head games         | (6) Coin flip or Braveheart            |

The scheduling committee may adjust seeding to avoid a first-round game between two teams from the same pool.